



HAMMONTREE HIGHLIGHTS



**A Newsletter from Hammontree & Associates, Ltd.
and Morris Knowles & Associates, Inc.**
(A Hammontree Company)

Engineers - Planners - Scientists - Surveyors

Offices in Ohio and Pennsylvania

Utica and Marcellus Shale - Pipelines - Drone Services - Transportation - Bridge
Civil Site - Municipal - Environmental Science - Structural - Landscape Architecture
Field Construction Monitoring Service - Surveying - Map Displays

Spring/Summer 2017

Inside this Edition

- Hammontree Provides Services to Akron Canton Airport
- Morris Knowles Provides Services for Dominion
- Ohio Bridge Partnership Program
- Hammontree Scientist Earns Certification
- New Partner Named
- Field Construction Monitoring Services and New Hire
- LuK USA Expansion
- New - Map Displays for Artistic Presentation

Akron Canton Airport Opens New Covered Parking Area Designed by Hammontree & Associates

Article on Page 2

Morris Knowles Provides Services for Dominion

Article on Page 3



Photos shown: Akron Canton Airport's New Covered Parking Area and Ribbon Cutting Ceremony including: Mr. Rick McQueen, President and C.O.O. of Akron Canton Airport; Honorable Gerard Neugebauer, Mayor of Green; Mr. Charles Hammontree, P.E., P.S., C.E.O. of Hammontree & Associates; Mr. Karl Oprisch, P.E., Transportation Manager at Hammontree; Northstar Asphalt, Inc.; Hilscher-Clarke Electric, and local dignitaries.

Continued from front page

Akron Canton Airport Opens New Covered Parking Area Designed by Hammontree & Associates

The ribbon cutting ceremony for the last part of the \$11 million improvement project for the Akron Canton Airport was held in February, 2017. The new \$2 million covered parking area, designed by Hammontree & Associates includes 250 parking spaces.

The improvements for the Akron Canton Airport include the new entrance and exit road, and parking areas. Hammontree worked with Horn Electrical Engineering on the electrical design and contractors included Northstar Asphalt, Inc., and Hilscher-Clarke Electric.

Services provided include:

- Site survey
- Sanitary sewer design
- Funding acquisition
- Storm sewer design
- Maintenance of traffic design
- Waterline design
- Planning
- Construction administration
- Public involvement
- Drone services for as-builts
- Roadway design
- Parking design

Hammontree Scientist, Jeffrey Rice, Earns Professional Certification

Mr. Rice recently received his certification as a Professional Soil Scientist, (CPSS) from the Soil Scientist Society of America. Mr. Rice also serves as Senior Wetland Specialist at Hammontree in Ohio, Pennsylvania and West Virginia. His professional status certifies him to evaluate soil capability to support sewage treatment systems in Ohio. Mr. Rice has a Bachelor of Science degree in Environmental Science from the Ohio State University. He is a member of the Association of Ohio Pedologists where he is listed as one of two consulting soil scientists from Ohio.



Photo above: Mr. Jeffrey Rice, CPSS

Mr. Rice joined Hammontree and Associates in 2011 and has performed over five hundred environmental assessments primarily working out of the North Canton, Ohio office.

Ohio Bridge Partnership Program Design Build Projects

Hammontree worked with three different contractors to design 10 bridges during 2016 and 2017. These bridges are all part of the Ohio Bridge Partnership Program and are all Design Build type projects.

Careful coordination and time management allowed for the design of 9 bridges in 2016 with the final bridge to be complete this Spring, 2017. Hammontree worked closely with ODOT and the contractors for these projects.

Services provided include:

- Base topographic survey and mapping
- Utility coordination
- Roadway profile design
- Hydrology and hydraulics
- Bridge design
- On going construction phase services
- As built drawings



Photo above: Knox County - Thayer Road Bridge

HAMMONTREE & ASSOCIATES, LIMITED

5233 Stoneham Road
North Canton, Ohio 44720
Phone 330-499-8817
Toll Free 1-800-394-8817

104 Newell Avenue
St. Clairsville, Ohio 43950
740-695-7237

www.hammontree-engineers.com

www.morrisknowles.com

Morris Knowles & Associates, Inc.
A Hammontree Company

443 Athena Drive, Delmont, PA 15626
724-468-4622

VOL. XXXVI No. 1
Spring/Summer 2017
Hammontree Highlights
is a
biannual publication.

ACEC
AMERICAN COUNCIL OF ENGINEERING COMPANIES



Officers

Charles F. Hammontree, P.E., P.S.
C.E.O. of MKA and H&A

James C. Bollibon, P.E., P.L.S.
President of MKA

Michael M. Vale, P.E., CPESC
Executive Vice President of H&A

William P. Utzman, P.E., CPESC
Vice President of MKA

Mr. Mark Zimmerman, P.E., CPESC, CPSWQ is Promoted to Partner

Mr. Mark Zimmerman, P.E., CPESC, CPSWQ is promoted to Partner. He joined the firm in 2011 and is the Senior Project Manager in the Civil Site Development Department at the firm's Delmont, Pennsylvania office.

He is a graduate of Penn State University with a B.S. in Civil Engineering and holds Professional Engineering Licenses in Ohio, Pennsylvania and West Virginia. He currently handles many of the firm's commercial land development accounts including: Speedway convenience stores, shopping centers, hotels and housing projects.

Mr. Mark Zimmerman resides in Apollo, Pennsylvania with his wife and daughter.



Photo above:
Mr. Mark Zimmerman, P.E.

Services Provided for Dominion

The firm's PA office, MKA, provided geotechnical investigations and prepared foundation recommendations for the new office/garage building and a new microwave tower between the two buildings.

MKA also completed geotechnical work for a new office building and access roadway in Salem Township for Dominion.



Photo above:
Dominion office and garage with tower

Field Construction Monitoring Services Now Provided

Field Construction Monitoring Services are now provided throughout OH, PA and WV. In addition, Mr. Dave Munn has joined the firm as a Senior Field Construction Representative.

Mr. Munn has over 25 years of construction monitoring experience and holds numerous quality assurance, safety and inspection certifications.

Construction monitoring services include:

- On-site owner's representative and construction compliance observation
- Daily progress reports
- Compaction and nuclear density gauge testing
- Soil, concrete and asphalt testing
- QA/QC inspections
- Slip repair and slope stability oversight
- Lime and cement soil stabilization oversight and recommendations
- Review of payment requests and quantities
- Final certification and punch list preparation



Photo above: Mr. Dave Munn
Photos below: Nuclear Density Gauge on a job site



New LuK USA Expansion Complete

The new 86,000 square foot plant expansion for LuK USA is complete. Hammontree was hired by R.G. Smith Company to provide civil engineering for this expansion including a new access drive, loading dock, new detention pond, revisions to the existing retention pond and two 60 ft. long retaining walls.

LuK USA designs and manufactures products and systems for engine, transmission and chassis applications.

Services provided include:

- Civil Site design and permitting
- Storm water pollution prevention plan
- Drainage control plan and grading plan
- Structural design for two 60 foot long retaining walls



Photo above: New LuK USA addition and retaining walls

New Map Displays for Artistic Presentation Service Now Offered

Hammontree & Associates, Ltd. is now offering Map Displays for Artistic Presentation from the CADD Mapping Department.

This service is for the individuals or organizations who hold dear their investment in the real estate of their home or business and want to portray it in a cultural setting. For maps we complete, or from a boundary survey performed by others, we will create a survey map into an artistic display with an historic looking quality worthy of framing and hanging in the reception area or study of one's business or home. We also provide the matted framing as part of the service.

Survey maps before the era of computers were not only an accurate representation of one's holdings, but also, when prepared carefully, were treasured works of art. We want to give our customers this artistic component from years gone by, now missed in the current age of mass production and automation.


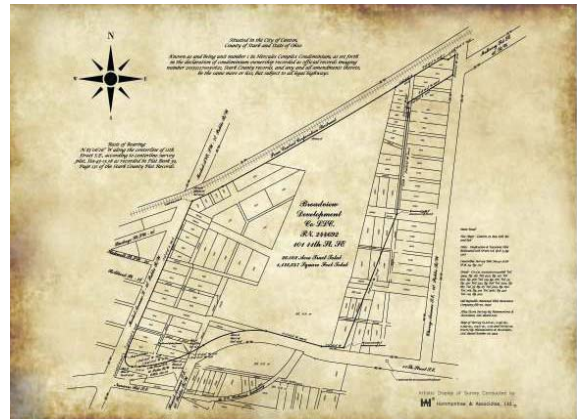
As a homeowner, business owner, or developer will confide they are truly proud of their creations and investments. What better way to share their pride than an elegant framed depiction of their home, business or development in the cast of a framed, historic looking crafted survey map. 



Photo shown above left to right: Mr. Robert Timken of Broadview Development receiving the framed maps and photos of the Hercules Engine Plant from Hammontree Engineer, Ms. Jennifer Schumacher, P.E., LEED-AP.

Photo shown below: Artistic style map rendering of the survey for the Hercules Engine Site.



HAMMONTREE & ASSOCIATES, LIMITED and MORRIS KNOWLES & ASSOCIATES, INC.

A Hammontree Company
Offices in Ohio and Pennsylvania
Engineers - Planners - Scientists - Surveyors

5233 STONEHAM ROAD
NORTH CANTON, OHIO 44720

ADDRESS CORRECTION REQUESTED